



NGR INTERPRETATIONS


PART 1

NATIONAL GRADING RULE FOR SOFTWOOD DIMENSION LUMBER INTERPRETATIONS

Approved November 4, 2004

1


1.0 GENERAL



The limiting provisions of the National Grading Rule are quite specific in delineating the characteristics permitted. Because lumber is manufactured from trees which have developed naturally and responsively to their environment and every piece is different it is not possible to anticipate in a grade description all of the possible combinations or types of characteristics which a grader will encounter. These National Grading Rule Interpretations provide additional information to the grader/inspector in the application of the National Grading Rule. These interpretations have been approved by the National Grading Rule Committee and shall be considered a mandatory part of the National Grading Rule.

All measurements are based on actual size unless otherwise specified except splits and warp are based on nominal.

The limitations on knot sizes and other characteristics governing strength shall not be exceeded.



1.1 BARK AND PITCH POCKETS

Bark or pitch pockets are not restricted as to number.

1.2 BEVEL SAWING

Limited on the basis of equivalent loss of wood from wane.

1.3 CELL COLLAPSE

Cell collapse shall be evaluated as either wane or skip.

1.4 CHIP AND SAW CHANNELS (RABBETED EDGE)

Is limited on a basis of wane except in those instances in which the depth or width of the cut exceeds the full length wane provisions, the limitation shall be on a basis of equivalent loss of wood from maximum natural wane.

NGR INTERPRETATIONS

1.5 COMPRESSION WOOD AND TIMBER BREAKS

Separations resulting from seasoning which occur in allowable bands of compression wood shall not be evaluated as timber breaks or compression failures.

Compression wood shall be limited in effect to other appearance or strength reducing characteristics permitted in the grade.

Compression failures and timber breaks are permitted only in the grades of Standard, NO. 3, Utility and Stud. They are limited to the size of the allowable knot hole.

1.6 HOLES

1.6.1 Insect Holes: Pin holes, grub holes and teredo holes are handled on an "equivalent smaller" basis. Equivalent smaller shall mean that the area occupied by all pin, grub and teredo holes shall be added together and treated as the maximum size hole permitted. For example, twelve $\frac{1}{4}$ " holes shall be accepted as equivalent to a single 1" hole. The poorest face shall govern.

1.6.2 Manufactured Holes: The area of a manufactured hole shall not exceed the equivalent area of the knot hole permitted and is limited to one manufactured hole in 12' of length, or two in longer lengths. The following length restrictions shall apply:

- **SELECT STRUCTURAL:** equal in length to diameter of hole permitted
- **NO. 1 and CONSTRUCTION:** equal in length to 1-1/2 times diameter of hole permitted.
- **NO. 2 and STANDARD:** equal in length to width of piece.
- **NO. 3, UTILITY and STUD:** equal in length to 1-1/2 times width of piece.

Manufactured holes are defects caused by the manufacturing process that are specifically listed in the grading rule (e.g. dog holes, log turner marks, debarker damage, etc.). The length of manufactured holes shall be the entire length of the defect encountered and limited to the frequency and length restrictions as listed.

NGR INTERPRETATIONS

Manufactured holes that have no more effect on the grade of the piece than wane shall be assessed and limited as wane but not a combination of the wane and manufactured hole limitations. The listed limitations for manufactured holes shall not be used to exceed the maximum wane limitations of the grade.

1

1.7 KNOTS

- 1.7.1 Knot Measurement:** Knots appearing on wide faces are measured between lines enclosing the knot drawn parallel to the edge (**Figure 1**). Knot size is equal to the average of the two wide face measurements (**Figure 2**).

Figure 1

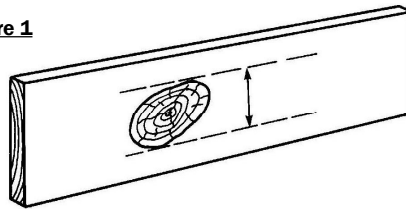
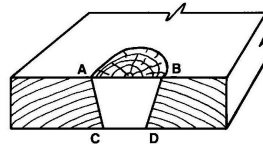


Figure 2



$$\text{Knot size} = \frac{AB + CD}{2}$$

Except as otherwise provided in these interpretations for knots on narrow faces, the cross sectional area displacement shall not exceed that of the maximum knot allowed at the edge of the wide face (see chart in **Figure 3** for allowable displacement percentages).

1.7.2 Spike Knots

Narrow face knots (spike knots) shall be measured according to the formulas depicted in **Figure 4**. The measurement of wide face knots overlapping one or two edges is demonstrated in **Figures 5a & 5b**.

NGR INTERPRETATIONS

Figure 3: Allowable Displacement of Narrow Face Knots
(in percentage)

Nom Width	LIGHT FRAMING			STRUCTURAL LIGHT FRAMING				STRUCTURAL JOISTS & PLANKS			
	Const	Stand	Util	SS	NO.1	NO.2	Stud NO.3	SS	NO. 1	NO. 2	NO. 3
2"	50	67	83	25	33	42	50				
3"	50	60	80	20	30	35	50				
4"	43	57	71	21	29	36	50				
5"								22	28	36	50
6"								20	27	34	50
8"								21	28	34	48
10"								20	27	35	49
12"								20	27	33	49
14"								18	24	31	45

Figure 3a: Narrow Face Knots

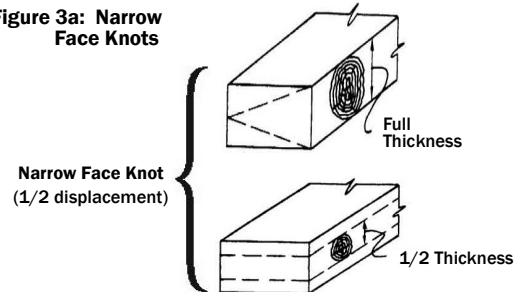
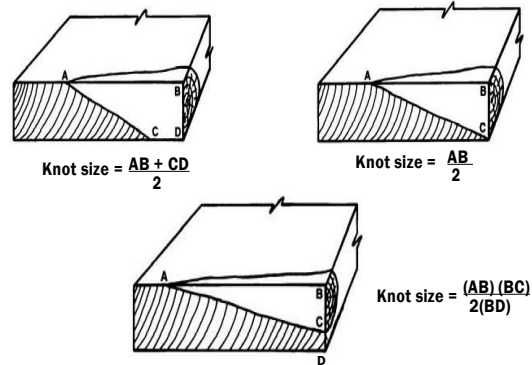
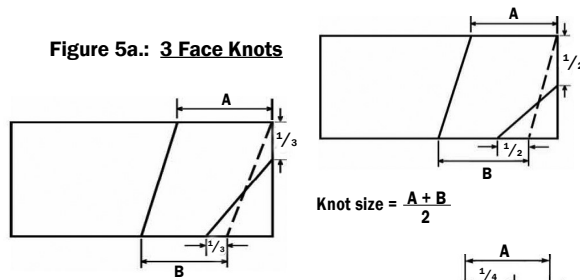


Figure 4: Spike Knots



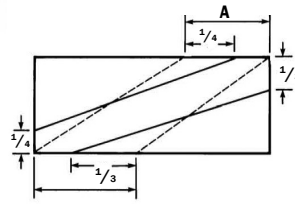
NGR INTERPRETATIONS

Figure 5a.: 3 Face Knots



1

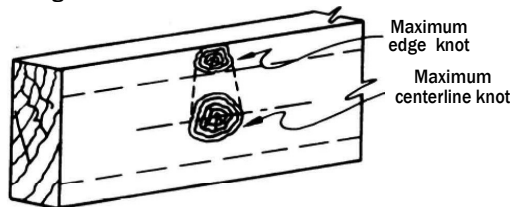
Figure 5b.: 4 Face Knot



1.7.3 Knot Location

The allowable size for knots on wide faces, when appearing away from the edge, shall be proportionately increased from the size specified for knots located at the edge of the wide face to the size specified for knots located along the centerline. The increase shall start at a distance from the edge equal to $1/2$ the diameter of the allowable edge knot (**Figure 6**).

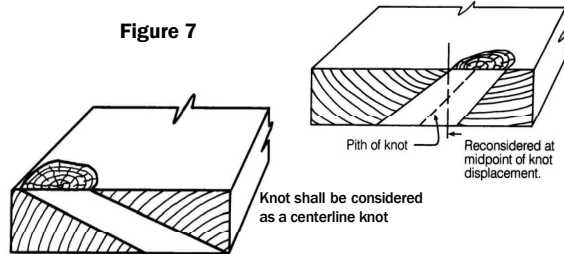
Figure 6



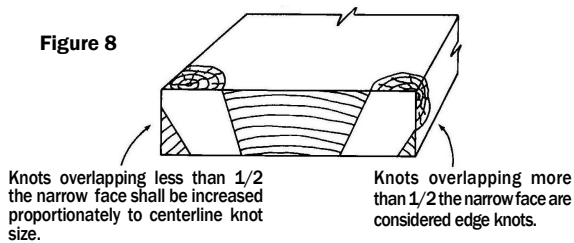
The size of knots on wide faces are permitted to be increased proportionately from the size permitted at the edge to the size permitted at the centerline.

NGR INTERPRETATIONS

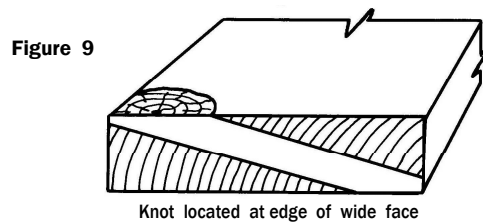
Knots appearing on the wide faces shall be considered as located at the '**Midpoint**' of its displacement (**Figure 7**).



A wide face knot overlapping part of the edge shall be considered an **Edge knot** if it occupies more than $\frac{1}{2}$ the thickness (**Figure 8**).



The allowable size for diagonal knots that only involve the wide face shall be proportionately increased to the size specified for knots located along the centerline (**Figure 7**). Diagonal knots involving both narrow faces are equated to an **Edge Knot** (**Figure 9**).

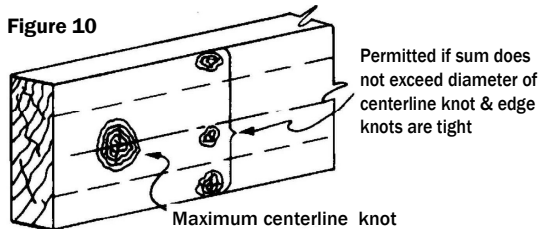


NGR INTERPRETATIONS

1.7.4 Knot Spacing

a) When two or more knots appear in the same cross section the sum of their sizes or displacement shall not exceed the maximum size specified for the centerline knot (**Figure 10**).

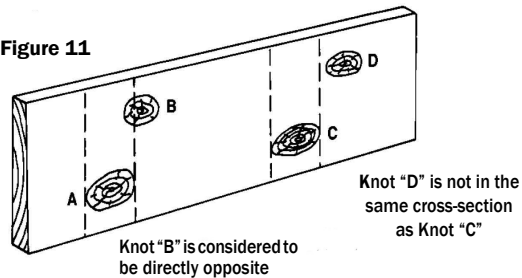
Figure 10



1

b) When reference is made to knots in the same cross section, the cross-section is the area across the width of a piece equal to the diameter of the largest knot present (**Figure 11**).

Figure 11



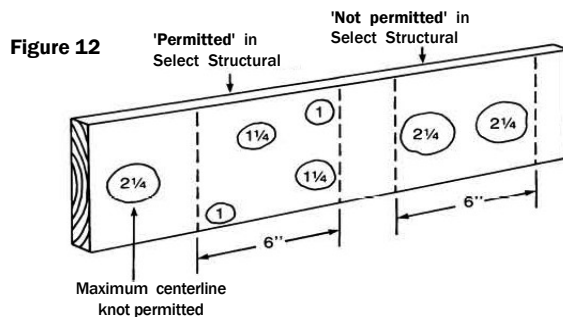
c) If loose knots, fixed knots or holes on the edge are involved, the sum of their sizes or displacement is **limited** to the maximum edge knot size.

When directly opposite spike knots in boxed heart pieces are involved, the sum of their sizes or displacement shall **not exceed** the allowable centerline knot.

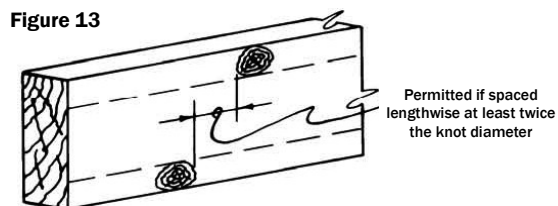
d) The sum of the sizes of all knots within any 6" of length shall not exceed **twice** the diameter of the allowable centerline knot (**Figure 12**). No two centerline knots of maximum size may appear in the same 6" of length.

NGR INTERPRETATIONS

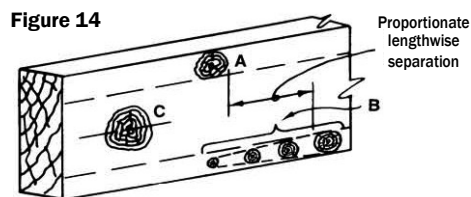
Example for a Select Structural 2 X 8



e) Two maximum edge knots appearing on opposite edges shall be spaced at least a lengthwise distance equal to **twice** the size of the allowable edge knot (**Figure 13**).



f) When the sum of knots at opposite edges on a wide face exceeds the allowable size of the centerline knot but either or both are less than the size allowed at edge of wide face, the lengthwise spacing shall be proportionate (**Figure 14**).



When "A" plus "B" exceeds the diameter of "C" but either or both are less than the maximum allowed, the lengthwise separation is proportionate

NGR INTERPRETATIONS

1.7.5 **Assessment of Grain Deviations Around Knots:**

Abnormal distortion is defined as grain deviation associated with a knot which is greater than that associated with a typical knot of the same size. When abnormal grain distortion is evident, the measurement of the knot size shall include the extent of distortion.

1

1.8 **PLANER TEARS**

Planer or chipper tears are permitted in NO. 2/Standard and higher grades provided they are not more than the width of the piece in length and not more than $\frac{1}{4}$ " in depth. In NO. 3, Utility, and Stud grades, tears shall not exceed the allowable hole size in depth, nor the permissible split in length.

1.9 **ROLLER CHECKS**

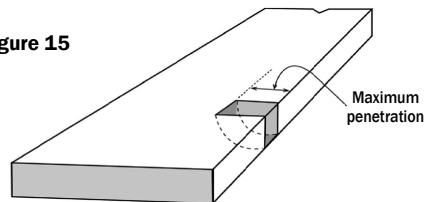
If through at the end, treat equivalent to a split. When away from ends, treat as shake.

1.10 **SAW CUTS (SAW KERFS)**

This characteristic occurs in two ways:

- 1) The cut passes completely through the thickness and extends across a portion of the width (**Figure 15**).

Figure 15

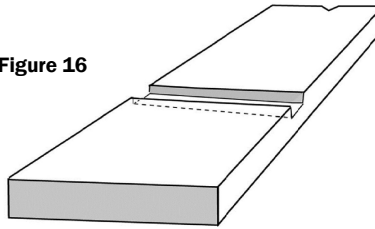


For Figure 15 saw cuts, the "**Maximum**" penetration across the width is restricted to $\frac{1}{2}$ the allowable edge knot size.

NGR INTERPRETATIONS

- 2) the cut does not pass completely through the thickness & extends completely or partially across the width (**Figure 16**).

Figure 16



The penetration of the saw cut described in Item 2 above, as depicted by **Figure 16** is restricted to $\frac{1}{2}$ the equivalent edge knot displacement.

Note: Generally saw kerfs are **not** permitted in *Select Structural and NO. 1 grades*.

1.11 SHAKE

A shake is “**well separated**” or “**scattered**” (i.e. not continuous) when there is evidence of wood separating the shakes.

A **surface** shake is not permitted to extend into an adjacent or opposite face.

In NO. 2 and Standard, shake through from one wide face to the other is **not** permitted to extend into the edge. A shake showing on only one wide face extending into the edge shall be limited to a depth of $\frac{3}{4}$ the thickness and a length of 2'.

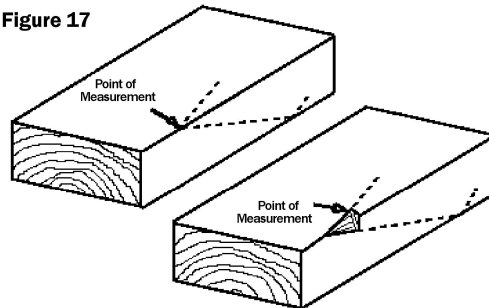
Shake extending from one wide face through the edge to the other wide face is permitted in NO. 3, Utility and Stud and is measured from the point at which the shake enters the piece as illustrated below (**Figures 17 & 18**). The shake shall not extend across the wide face more than the width of the allowable hole. The shake is limited in length to $\frac{1}{6}$ the length of the piece in NO. 3, and Utility, and $\frac{1}{3}$ the length of the piece in Stud grade.

1.11.1 Method of Measuring Shake

Shake limitations are stated in the rule. Measure shakes parallel to the wide face.

NGR INTERPRETATIONS

Figure 17



1

Figure 19

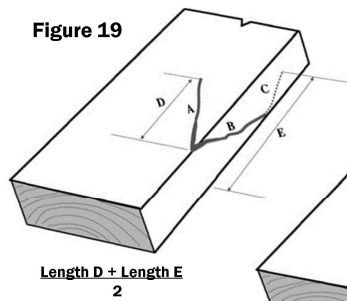


Figure 20

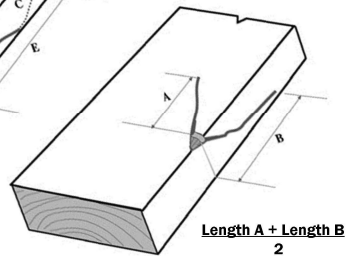


Figure 21

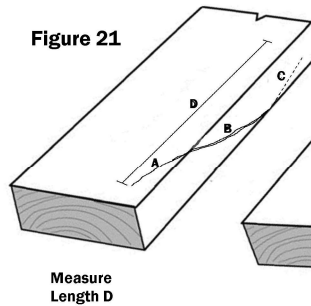
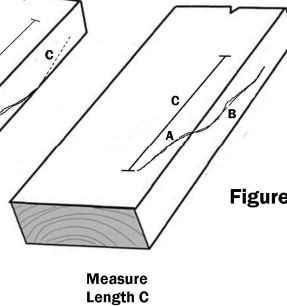


Figure 22



NGR INTERPRETATIONS

1.12 SKIPS

"**Hit & Miss**" skip is defined as a series of skips not over $\frac{1}{16}$ " deep with surfaced areas between. Where this degree of skip is permitted, it shall be further clarified to include that the "**hits**" shall average one hit per four lineal feet of length.

A "**hit**" is a plainly visible surfaced area approximately $\frac{1}{2}$ the width or more and 2" or more in length. No piece shall have less than two hits.

"**Hit or Miss**" provisions shall not be used to permit surfacing below specified minimum sizes.

When skips appear on opposing faces, the combined scantness shall not exceed the depth permitted.

In **Select Structural, NO. 1 & Construction**, one medium skip 2' in length is **not** to be included in the limitation of "10% hit & miss."

In **NO. 3 & Utility**, the maximum skip must never appear on both the wide face and narrow face in the same cross section.

Skips permitted on the surfaced face of resawn Stress Rated Boards is limited according to the rules under which it is graded, independent of the variation in thickness permitted in resawn boards.

1.13 SLOPE OF GRAIN

Slope of Grain on Narrow Faces and Local Deviations:

In 1" stress-rated boards or similar small sizes of stress-rated lumber, a general slope of grain anywhere in the length shall not pass completely through the thickness of the piece in a longitudinal distance in inches less than the number expressing the specified permissible slope. Where such a slope varies across the width of the board, its average shall be taken, except when the slope of grain occurs in a way that effects the piece more than other permitted strength reducing grade characteristics. Slope of grain on narrow faces of 2" in nominal thickness and thicker shall be measured on the same basis as on wide faces.

Local deviations must be considered in small sizes, and if a local deviation occurs in a piece less than 4" nominal in width or on the narrow face of a piece less than 2" nominal in thickness, and is not associated with a permissible knot in the piece, the measurement of slope shall include the local deviation.

NGR INTERPRETATIONS

1.14 SPLITS

Splits are measured by average penetration. One maximum allowable split is permitted on each end of the piece. No increase in length of split in overlength pieces is permitted as well as no increase outside of middle 1/2 of width.

1.15 UNSOUND WOOD

1

Note¹: “Heart Center Streaks” is a localized decay peculiar to Southern Yellow Pine and the limitation applies to that species.

Note²: “Peck” is a type of decay peculiar to species of cedar and applies to those species.

Note³: “Honeycomb” is found in most softwood species and is similar to “white speck” except the pitted areas are more elongated or channeled.

Note⁴: “Firm” in relation to white speck and honeycomb provisions infers that it will not crumble readily under thumb pressure and cannot be easily picked out.

In **NO. 2** and **Standard**, white speck “**1/3 face or equivalent**” is a volume restriction. When white speck appears, it is limited to the following or equivalent area:

- a) a maximum of 1/3 the length for the full width of the face; or
- b) a maximum of 1/3 the width of the face for the full length.

In **NO. 2** and **Standard**, firm honeycomb or peck on the narrow face that occupies the entire thickness shall **not** penetrate more than 1/6 the width of the wide face and such peck is restricted to not longer than twice the knot hole size in length.

In **NO. 3**, **Utility** and **Stud**, “**spots or streaks**” of soft decay occurring on one face shall **not** be limited in length; if through two faces; each streak is limited to 1/6 the length of the piece. Measurement shall be taken in the through portion of the streak.

1.16 WANE

In reference to Para. 750, wane is permitted to extend partially or completely through the narrow face **provided** it does **not** displace more area than the allowable hole and does not exceed in length more than twice the allowable hole diameter.

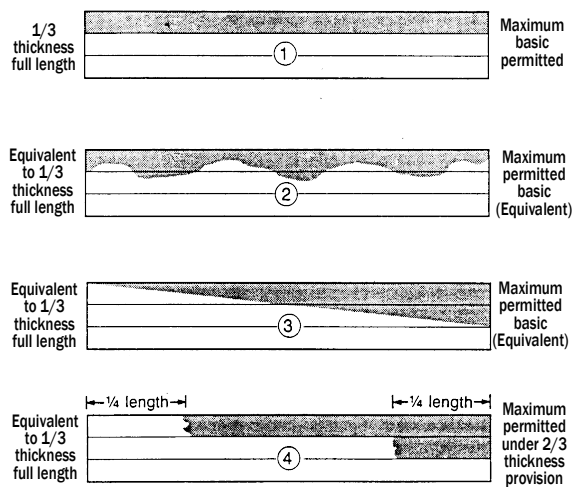
Wane is permitted to extend partially or completely across any face **provided** it does **not** exceed the depth of the specified skip **nor** exceed one foot in length.

NGR INTERPRETATIONS

Such wane permitted in the grade description shall be measured at the point that wane exceeds the maximum thickness or width provision as stated in the grade. Wane extending partially or completely across any face shall be included in the assessment of equivalent wane. "Away from ends" means such wane shall not appear on the end section of the piece. (See **Figure 23**)

WANE EXAMPLES - THICKNESS - NO. 2 & Standard Grades

Figure 23



- 1) Basic
- 2) Equivalent to basic
- 3) Equivalent to basic
- 4) Equivalent to basic. Maximum amount of incremental wane permitted

Basic wane is maximum full length wane as stated in the NGR. The same concept of equivalent wane in thickness and width applies to all grades within their respective stated limitations.



NGR INTERPRETATIONS

1.17 WARP

1.17.1 Measurement of Crook, Twist and Bow when in Combination

When two or more forms of warp are both present in the same piece, only proportionate amounts of each are permitted. Maximum warp is based on gradual deviation from one end of the piece to the other.

1

1.17.2 Bow is limited according to thickness, not width.

1.17.3 Other Forms of Warp are limited according to width.